

7th Congress of the Turkish Society of Sports Traumatology

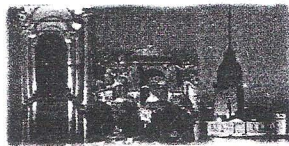
Arthroscopy and Knee Surgery

Combined With

The 3rd Congress of Asia-Pacific Knee Society

APKS (Section of Asia-Pacific Orthopaedic Association "APOA")

2004



Istanbul October 30-31

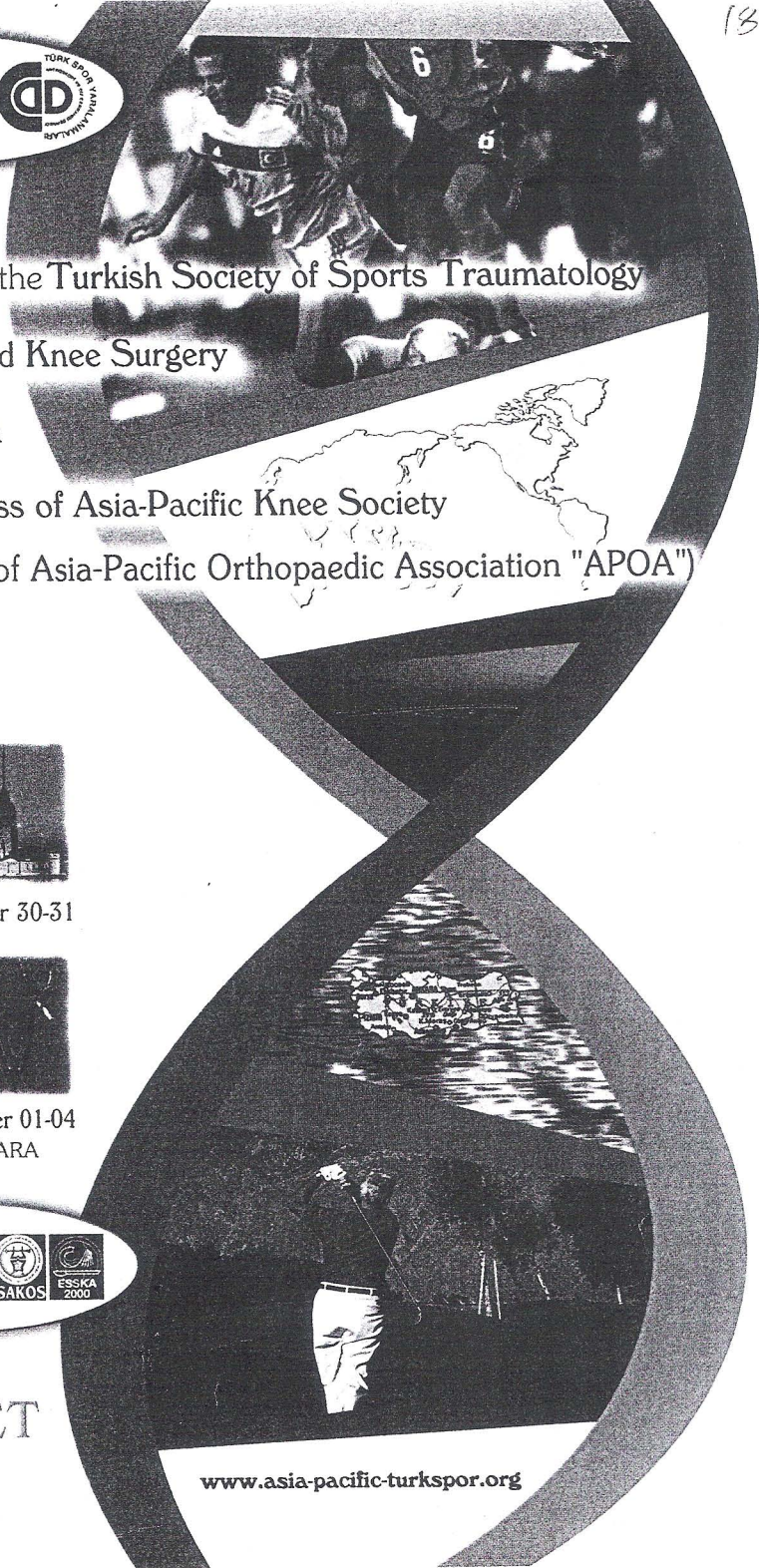


Ankara November 01-04
Hilton Hotel-ANKARA



ABSTRACT
BOOK

www.asia-pacific-turkspor.org



RETINACULAR BANDS UNDER MEDIOPATELLAR PLICA: A NEW ANATOMICAL FINDING

Yılmaz C. ¹, Öztürk H. ², Gölpınar A. ¹, Uzmansel D. ², Eskandari M.M. ¹

¹Department of Orthopedics and Traumatology, Mersin University Medical School, Mersin, Turkey

²Department of Anatomy, Mersin University Medical School, Mersin, Turkey

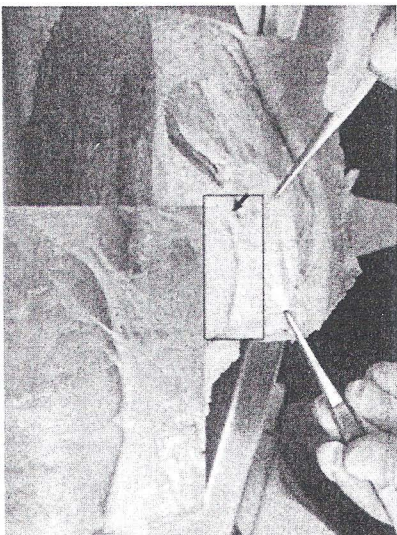
OBJECTIVES: After arthroscopic resection of the mediopatellar plica in thin patients we noticed that the chord was still palpable at the anteromedial portion of the knee. A thick fibrous retinacular band was observed beneath the excised plica.

METHODS: In five cadaver knees we carried out a dissection in search for this band.

RESULTS: A 0.5 cm wide and 3 cm long fibrous band was discovered under the deep layer of the medial retinaculum. The band was in close proximity to the mediopatellar plica.

CONCLUSIONS: We believe this retinacular band may play a role in the symptomatology and the pathomechanism of the plica syndrome and the associating chondral injury.

Figure 1a



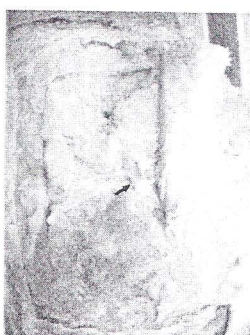
Retinacular band

Figure 1b



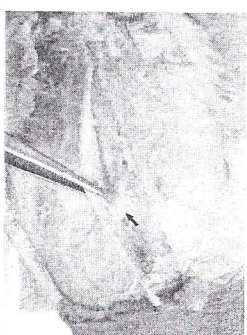
Retinacular band

figure 1c



retinacular band

Figure 1d



retinacular band