

Phenotypic and genetic homogeneity of *Yersinia ruckeri* strains isolated from farmed rainbow trout, *Oncorhynchus mykiss* (Walbaum), in Mersin Province, Turkey

S. Özer^{1*}, P. Bulduklu¹, E. Dönmez¹, E. Koyuncu¹,
M.S. Serin², G. Aslan³, S. Tezcan³, E. Aydin³ and
G. Emekdas³

¹Mersin University, Faculty of Fisheries, Department of Aquaculture, Yenisehir Kampüsü, 33169 Mersin, Turkey; ²Mersin University, Faculty of Pharmacy, Department of Pharmaceutical Microbiology, Yenisehir Kampüsü, 33169 Mersin, Turkey; ³Mersin University, Faculty of Medicine, Department of Medical Microbiology, Zeytinlibahce, Mersin, Turkey.

Abstract

Twenty-four *Yersinia ruckeri* strains isolated from farmed rainbow trout, *Oncorhynchus mykiss* (Walbaum), in Mersin Province (Turkey) were investigated for phenotypic and genetic homogeneity by conventional microbiological techniques, the ID32GN system and arbitrarily primed polymerase chain reaction (AP-PCR). All isolates displayed phenotypic and genetic homogeneity by these techniques.

Introduction

Yersinia ruckeri is a Gram-negative enterobacterium and the causative agent of enteric redmouth disease (ERM) of salmonid and non-salmonid fishes reared in both fresh and marine waters. ERM is an infectious disease, which produces high mortalities and severe economic losses in farmed fish, particularly rainbow trout, *Oncorhynchus mykiss* (Walbaum) and Atlantic salmon, *Salmo salar* L. (Austin & Austin, 1993; Stevenson et al., 1993). Since the disease was first detected in the USA in the 1950's, it has been identified worldwide over the last two decades (Alvarez et al., 1992; Bragg & Henton, 1986; Cipriano et al., 1986; Dalsgaard et al., 1984; Davies & Frerichs, 1989; De La Cruz et al., 1986; Fouz et al., 2006; Fuhrmann et al., 1983; McCormick

& McLoughlin, 1993; Petrie et al., 1996; Rodriguez et al., 1999; Savvidis, 1990; Soltani et al., 1999; Sousa et al., 1994; Sparboe et al., 1986; Valtonen et al., 1992). Furthermore, *Yersinia ruckeri* was also recovered from wild fish, birds and mammals (Willumsen, 1989).

Several techniques have been applied to identify *Y. ruckeri* and to investigate relatedness among isolated strains. Traditional phenotypic tests and their miniaturized forms for automation have been used as 'gold standard'. However, many isolates are still poorly identified by these methods and supplementary tests are often required for a complete identification (Ibrahim et al., 1993; Linde et al., 1999). Molecular methods such as PCR have been

*Corresponding author's E-mail: selmin.oezer@gmail.com

successfully used for *Yersinia ruckeri* identification and characterisation (LeJeune & Rurangirwa, 2000; Lucangeli et al., 2000; Romalde et al., 1993; Sousa et al., 2001; Temprano et al., 2001; Yugueros et al., 2001). Arbitrarily primed polymerase chain reaction (AP-PCR), also known as random amplified polymorphic DNA (RAPD), devised by Welsh and McClelland (1990) and by Williams et al. (1990), has previously been applied for genetic characterization studies of various bacteria (Aguilera-Arreola et al., 2005; Balboa et al., 2007; Emekdas et al., 2006; Grayson et al., 1999; Inglis et al., 1996; Thomas-Jinu & Goodwin, 2004).

In Turkey, following the first identification of ERM in rainbow trout in 1991 (Cagirgan & Yürekli Türk, 1991; Timur & Timur, 1991) the disease has been reported several times (Atesoglu, 1999; Diler et al., 2000; Kirkan et al., 2000). However, this is the first investigation reporting ERM at commercial rainbow trout farms in the Eastern Mediterranean part of Turkey and using AP-PCR for genetic homogeneity of *Yersinia ruckeri* in Turkey.

Therefore, our aim was to detect phenotypic and genetic homogeneity of *Y. ruckeri* strains isolated from seven different rainbow trout farms by conventional cultivation, biochemical characterization, the ID32GN system and AP-PCR methods, in our region.

Materials and methods

Source of Yersinia ruckeri strains

Totally 259 fish were investigated at seven rainbow trout farms in Mersin province in a one year period in 2005. From each farm 5-10

fish were sampled seasonally. For bacterial isolation, samples from both clinically diseased and apparently healthy fish has been taken from gill, liver, kidney and brain and directly streaked onto tryptic soy agar (TSA, Merck) supplemented with 5 % sheep blood. Plates were incubated at 20°C for 48 h.

Characterization of the isolates

Pure cultures were obtained on TSA. Bacterial isolates were biochemically characterized by the following selected criteria: Gram staining, cell morphology, oxidase, catalase, motility, oxidative-fermentative metabolism of glucose, lysine decarboxylase, methyl red, Voges-Proskauer, production of acid and gas from glucose, H₂S, indole, fermentation of sucrose, lactose and sorbitol and utilization of Simmon's citrate. Biochemical characterization was performed according to standardized methods (Austin & Austin, 1993; Cowan, 1975; Frerichs, 1993; Plumb & Bowser, 1983). In addition, the isolates were identified in ID32GN automatic identification system for Gram-negative rods (BioMérieux, France) according to the manufacturer's instructions, except that incubation was at 30°C for 24-48 h.

Genetical homogeneity of Y. ruckeri

Detection of genetic homogeneity of *Y. ruckeri* isolates was done by AP-PCR. As exemplary of 24 *Y. ruckeri* isolates 12 isolates has been used. *Yersinia ruckeri* reference strain (Italian Rainbow trout isolate, 18-83, Serotype O1) (Kubilay & Diler, 1999) and our previous isolates *Yersinia intermedia* and *Hafnia alvei* have been used as control microorganisms.

Bacterial DNA preparation

Each isolate was cultivated on one Mueller Hinton agar plate and bacterial colonies were harvested with sterile saline. Three ml of bacteria suspension was collected and washed 3 times with sterilized saline by centrifugation at 5000xg for 5 min for each spin. After the last centrifugation, the supernatant was discarded and the pellet was resuspended with 3 ml sterilized saline. Finally, 100 µl of this fluid was taken and mixed with 300 µl of lysis buffer (13.3 mmol/l Tris-HCl [pH 8.0], 6.7 mmol/l ethylenediaminetetraacetic acid, 0.67 % sodium dodecyl sulfate, 133µg/ml proteinase-K) and incubated overnight at 56°C. Two phenol-chloroform extractions were followed by one chloroform extraction, and DNA was precipitated with ethanol. The precipitate was dissolved in 50 µl of TE-buffer (10 mmol/l Tris-HCl [pH 8.0], 1 mmol/l ethylenediaminetetraacetic acid).

AP-PCR amplification

The oligonucleotide primer (M13) was chosen from a method book of Durmaz & Ayan (2001). Two µl of DNA solution were amplified in a 50 µl reaction containing 75 mM Tris-HCl [pH 8.8], 0.2 mM dNTPs (Promega, U1330), 1.5 mM MgCl₂ (Promega, A3513), 0.5 µM of universal primer M13 (5V-GAGGGTGGCGGTCT-3V), and 1 U Taq polymerase (Promega M1665). The PCR conditions were 2 cycles of 5 min at 94°C, 5 min at 40°C and 72°C, followed by 40 cycles of 60 s at 94°C, 60 s at 40°C and 60 s at 72°C. PCR products were separated on a 1.8 % agarose gel and stained with ethidium bromide.

Results

Source of *Yersinia ruckeri* strains

Twenty-four *Y. ruckeri* strains were isolated from 24 (9.3%) of 259 rainbow trout samples. *Yersinia ruckeri* was recovered from all seven farms.

Biochemical characterization of the isolates

Pure bacterial cultures have been used for biochemical characterization. The isolates demonstrated a great phenotypic homogeneity. All Gram negative, oxydase negative, catalase positive and fermentative rods showed positive reaction of motility, lysine decarboxylase, methyl red, and production of acid from glucose. The isolates were negative in production of gas from glucose, acid from sucrose, lactose and sorbitol, H₂S, indole, Voges-Proskauer and utilisation of Simmon's citrate.

These data were also confirmed with the ID32GN system. Whereas 23 isolates were

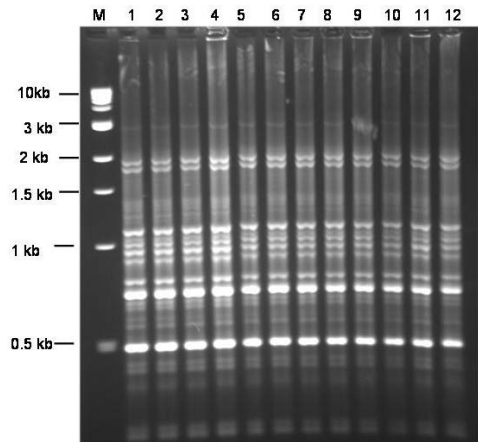


Figure 1. Genotypical discrimination of 12 *Yersinia ruckeri* isolates: Lane M: 1 kb DNA ladder (BioLabs, N3232S), lane 1-lane 12; example isolates form 7 farms.

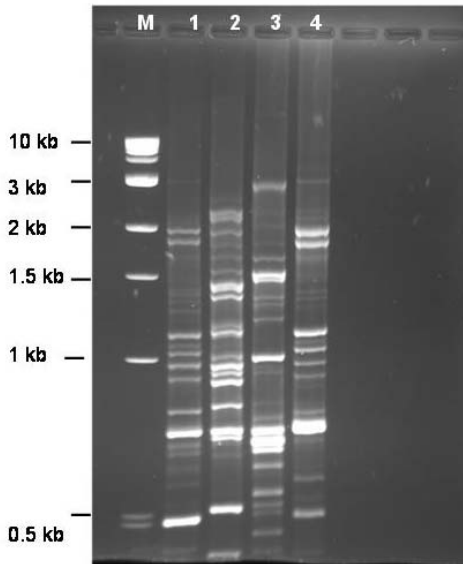


Figure 2. Comparison of *Yersinia ruckeri* isolates with other bacterial isolates and *Yersinia ruckeri* reference strain: Lane M: 1 kb DNA ladder (BioLabs, N3232S), lane 1: *Yersinia ruckeri* from the present study, lane 2: *Yersinia intermedia*, lane 3: *Hafnia alvei*, lane 4: *Yersinia ruckeri* reference strain.

identified as *Y. ruckeri* with good or very good votes, one isolate showed low discrimination.

Genetic homogeneity of Yersinia ruckeri

The AP-PCR results indicated that all isolates were genetically homogenous. Figure 1 demonstrates the band patterns of amplification products from 12 different isolates obtained from seven farms (Figure 1, lane 1-lane 12). All these patterns were clearly the same as seen in Figure 1. We have also compared these band patterns with AP-PCR products of *Y. ruckeri* reference strain (Italian Rainbow trout isolate) and 2 of our previous isolates *Yersinia intermedia* and *Hafnia alvei* (Figure 2). In lane 1, a selected sample reflecting all our 24 isolates was compared with band patterns of *Y. intermedia* (lane 2), *H. alvei* (lane 3) and *Y. ruckeri* reference strain

(lane 4) (Figure 2). It is clearly seen that our sample isolate is very similar to, but not identical with reference *Y. ruckeri* isolate and quite different than *Y. intermedia* and *H. alvei*.

Discussion

In the present study, 24 *Yersinia ruckeri* strains have been isolated in 24 (9.3%) of 259 rainbow trout samples obtained from seven commercial rainbow trout farms in Mersin province. These findings demonstrated that the widespread bacteria also threatens the health of rainbow trout reared in the eastern Mediterranean part of Turkey.

While many isolates are still poorly identified by traditional biochemical techniques and some commercial kits based on phenotypic properties (Ibrahim et al., 1993; Linde et al., 1999), we have found high agreement between classical biochemical techniques, ID32GN system and AP-PCR methods. All 24 *Y. ruckeri* isolates obtained in the present study demonstrated phenotypic and genetic homogeneity.

Various PCR techniques have been performed to identify *Yersinia ruckeri*. In a study for definitive identification of *Yersinia ruckeri* LeJeune & Rurangirwa (2000) used selected primer pairs to amplify a 409 bp fragment of 16S rDNA and reported the serovar specificity of the bacteria. They propose that this assay provides a rapid, definitive identification of *Y. ruckeri*. Yugueros et al. (2001) used *AluI* restriction fragment length polymorphism (RFLP) of the *Yersinia ruckeri aroA* gene to differentiate between *Y. ruckeri* and other bacteria. They suggested that the specificity and sensitivity make this PCR assay a useful

method for rapid identification and diagnosis of *Y. ruckeri* infections. Temprano et al. (2001) reported that detection of *Yersinia ruckeri* by PCR amplification of *yruR/yruI* genes has great potential for rapid identification of this fish pathogen because of the high specificity of the test.

On the other hand, molecular characterization studies of *Y. ruckeri* strains have been carried out by several researchers. Lucangeli et al. (2000) have studied the ribotypes, patterns of pulsed-field gel electrophoresis (PFGE) and interspersed repeated sequences (IRS)-PCR of 30 *Yersinia ruckeri* O1 strains. They have reported that all of the *Y. ruckeri* O1 strains presents an extremely high level of genetic homogeneity. Sousa et al. (2001) have comparatively studied by means of lipopolysaccharide (LPS) and outer membrane protein (OMP) analysis, plasmid profiling and ribotyping in order to investigate the heterogeneity among *Y. ruckeri* isolates. They have considered that ribotyping is the best candidate for epidemiological studies, because it is easier to perform and offers a slightly better discriminative power. However, AP-PCR has been used for genetic characterization of fish pathogenic bacteria like *Aeromonas* species (Aguilera-Arreola et al., 2005; Inglis et al., 1996), *Renibacterium salmoninarum* (Grayson et al., 1999), *Flavobacterium columnare* (Thomas-Jinu & Goodwin, 2004) and *Pseudomonas anguilliseptica* (Balboa et al., 2007). There was a concurrence that AP-PCR promises to be useful in epidemiological studies for rapid identification of bacteria. Argenton et al. (1996) have used RAPD to generate specific

molecular probes for hybridization tests and PCR-based diagnosis of *Yersinia ruckeri*.

Our observations indicated that all 24 *Y. ruckeri* isolates examined in the present study demonstrated genetic homogeneity by means of the AP-PCR method. This is the first field study using AP-PCR method to determine genetic homogeneity of *Y. ruckeri*. We suggest that this method is quite useful for genetic characterization of *Y. ruckeri*. It is also easily implemented in laboratories working in this area.

References

- Aguilera-Arreola MG, Hernández-Rodríguez C, Zúñiga G, Figueras MJ & Castro-Escarpulli G (2005). *Aeromonas hydrophila* clinical and environmental ecotypes as revealed by genetic diversity and virulence genes. *FEMS Microbiology Letters* **242**, 231–240.
- Alvarez JD, Austin B & Conroy DA (1992). First outbreak of enteric redmouth in rainbow trout (*Oncorhynchus mykiss* Walbaum) cultured in Venezuela. *Bulletin of the European Association of Fish Pathologists* **12**, 189–190.
- Argenton F, De Mas S, Malocco C, Dalla Valle L, Giorgetti G & Colombo L (1996). Use of random DNA amplification to generate specific molecular probes for hybridization tests and PCR-based diagnosis of *Yersinia ruckeri*. *Diseases of Aquatic Organisms* **24**, 121–127.
- Austin B & Austin DA (1993). **Bacterial Fish Pathogens**. 2nd ed. Ellis Horwood, London. ISBN 0 13 059494 6.
- Atesoglu A (1999). Isolation and identification of *Yersinia* from rainbow trout and detection of antigen from tissues with indirect fluorescence antibody test. *Pendik Veteriner Mikrobiyoloji Dergisi* **30**, 43–53. (In Turkish).

- Balboa S, Ferguson HW & Romalde JL (2007). Phenotypic, serological and genetic characterization of *Pseudomonas anguilliseptica* strains isolated from cod, *Gadus morhua* L., in northern Europe. *Journal of Fish Diseases* **30**, 657-664.
- Bragg RR & Henton MM (1986). Isolation of *Yersinia ruckeri* from rainbow trout in South Africa. *Bulletin of the European Association of Fish Pathologists* **6**, 5-6.
- Cagirgan H & Yürekli Türk O (1991). First isolation of *Yersinia ruckeri* from rainbow trout farm in Turkey. The fifth Conference of EAAP, Diseases of Fish and Shellfish, 24-29 August 1991, Book of Abstract, 131.
- Cipriano RC, Schill WB, Pyle SW & Horner R (1986). An epizootic in chinook salmon (*Oncorhynchus tshawytscha*) caused by a sorbitol-positive serovar 2 strain of *Yersinia ruckeri*. *Journal of Wildlife Diseases* **22**, 488-492.
- Cowan ST (1975). **Manual for the Identification of Medical Bacteria**. 2nd Ed. Cambridge University Press. ISBN 0 521 20399 6.
- Dalsgaard I, From J & Hørlyck V (1984). First observation of *Yersinia ruckeri* in Denmark. *Bulletin of the European Association of Fish Pathologists* **4**, 10.
- Davies RL & Frerichs GN (1989). Morphological and biochemical differences among isolates of *Yersinia ruckeri* obtained from wide geographical areas. *Journal of Fish Diseases* **12**, 357-365.
- De La Cruz JA, Rodriguez A, Tejedor C, De Lucas E & Orozco, LR (1986). Isolation and identification of *Yersinia ruckeri*, causal agent of enteric redmouth disease (ERM), for the first time in Spain. *Bulletin of the European Association of Fish Pathologists* **6**, 43-45.
- Diler Ö, Altun S, Diler A, Isikli BI & Gürcan ÖC (2000). A study on bacterial microflora and their control of rainbow trout (*Oncorhynchus mykiss*, Walbaum) in some trout farms. *Süleyman Demirel Üniversitesi Fen Bilimleri Enstitüsü Dergisi*, **4**, 58-69. (In Turkish).
- Durmaz R & Ayan M (2001). *Acinetobacter baumannii* izolatlarının moleküler epidemiyolojisinde Arbitrarily Primed "PZR ve Pulsed-Field Gel" Elektroforezi. In "Uygulamalı Moleküler Mikrobiyoloji" (R. Durmaz, ed.), pp.219-228. Nobel Tip Kitabevleri, Istanbul.
- Emekdas G, Aslan G, Tezcan S, Serin MS, Yıldız C, Özturhan H & Durmaz R (2006). Detection of the frequency, antimicrobial susceptibility, and genotypic discrimination of *Aeromonas* strains isolated from municipally treated tap water samples by cultivation and AP-PCR. *International Journal of Food Microbiology* **107**, 310-314.
- Fouz B, Zarza C & Amaro A (2006). First description of non-motile *Yersinia ruckeri* serovar I strains causing disease in rainbow trout, *Oncorhynchus mykiss* (Walbaum), cultured in Spain. *Journal of Fish Diseases* **29**, 339-346.
- Frerichs GN (1993). Isolation and identification of fish bacterial pathogens. In "Bacterial Diseases of Fish" (V Inglis, RJ Roberts & NR Bromage, eds.), pp. 257-283. Blackwell Science Ltd., Oxford. ISBN 0 632 03497 1.
- Fuhrmann H, Böhm KH & Schlotfeldt HJ (1983). An outbreak of enteric redmouth disease in West-Germany. *Journal of Fish Diseases* **6**, 309-311.
- Grayson TH, Cooper LF, Atienzar FA, Knowles MR & Gilpin ML (1999). Molecular differentiation of *Renibacterium salmoninarum* isolates from worldwide locations. *Applied and Environmental Microbiology* **65**, 961-968.

Ibrahim A, Goebel B M, Liesack W, Griffiths M & Stackebrandt E (1993). The phylogeny of the genus *Yersinia* based on 16S rDNA sequences. *FEMS Microbiology Letters* **114**, 173–178.

Inglis V, Colquhoun D, Pearson MD, Miyata M & Aoki T (1996). Analysis of DNA relationships among *Aeromonas* species by RAPD (randomly amplified polymorphic DNA) typing. *Aquaculture International* **4**, 43–53.

Kirkan S, Göksoy EÖ & Kaya O (2000). Isolation of *Yersinia ruckeri* from rainbow trout in Aydin region. *Pendik Veteriner Mikrobiyoloji Dergisi* **31**, 23-30. (In Turkish).

Kubilay A & Diler Ö (1999). Serotyping of *Yersinia ruckeri* strains isolated from rainbow trout by slide agglutination test. *Süleyman Demirel Üniversitesi Su Ürünleri Fakültesi Dergisi* **6**, 40-47. (In Turkish).

LeJeune JT & Rurangirwa FR (2000). Polymerase chain reaction for definitive identification of *Yersinia ruckeri*. *Journal of Veterinary Diagnostic Investigation* **12**, 558–561.

Linde HJ, Neubauer H, Meyer H, Aleksic S & Lehn N (1999). Identification of *Yersinia* species by the Vitek GNI card. *Journal of Clinical Microbiology* **37**, 211–214.

Lucangeli C, Morabito S, Caprioli A, Achene L, Busani L, Mazzolini E, Fabris A & Macri A (2000). Molecular fingerprinting of strains of *Yersinia ruckeri* serovar O1 and *Photobacterium damsela* subsp. *piscicida* isolated in Italy. *Veterinary Microbiology* **76**, 273-281.

McCormick JI & McLoughlin MF (1993). The Characterization and pathogenicity of the first isolate of *Yersinia ruckeri* from rainbow trout (*Oncorhynchus mykiss* Walbaum) in Northern Ireland. *Bulletin of the European Association of Fish Pathologists* **13**, 138-140.

Petrie J, Bruno DW & Hastings TS (1996). Isolation of *Yersinia ruckeri* from wild Atlantic Salmon, *Salmo salar* L., in Scotland. *Bulletin of the European Association of Fish Pathologists* **16**, 83-84.

Plumb JA & Bowser PR (1983). “**Microbial Fish Disease Laboratory Manual**”. Brown Printing Company, Montgomery, Alabama.

Rodriguez LA, Castillo A, Gallardo CS & Nieto TP (1999). Outbreaks of *Yersinia ruckeri* in rainbow trout in North West of Spain Title. *Bulletin of the European Association of Fish Pathologists* **19**, 130-132.

Romalde JL, Magariños B, Barja JL & Toranzo AE (1993). Antigenic and molecular characterization of *Yersinia ruckeri*. Proposal for a new intraspecies classification. *Systematic and Applied Microbiology* **16**, 411-419.

Savvidis GK (1990). First isolation of *Yersinia ruckeri* from rainbow trout, *Oncorhynchus mykiss*, in Greece. *Bulletin of the European Association of Fish Pathologists* **10**, 131-132.

Soltani M, Fard FF & Mehrabi MR (1999). First report of a yersiniosis-like infection in Iranian farmed rainbow trout. *Bulletin of the European Association of Fish Pathologists* **19**, 173-177.

Sousa JA, Nuñez S, Eiras JC & Toranzo AE (1994). *Yersinia ruckeri* in Portugal: Characterization of the first isolates from fish and environment. *Bulletin of the European Association of Fish Pathologists* **14**, 113-116.

Sousa JA, Magariños B, Eiras JC, Toranzo AE & Romalde JL (2001). Molecular characterization of Portuguese strains of *Yersinia ruckeri* isolated from fish culture systems. *Journal of Fish Diseases* **24**, 151-159.

Sparboe O, Koren C, Håstein T, Poppe T & Stenwig H (1986). First isolation of *Yersinia ruckeri* from farmed in Norwegian salmon. *Bulletin of the European Association of Fish Pathologists* **6**, 41-42.

- Stevenson R, Flett D & Raymond BT (1993). Enteric Redmouth (ERM) and other enterobacterial infections of fish. In "**Bacterial Diseases of Fish**" (V Inglis, RJ Roberts & NR Bromage, eds.), pp. 80-105. Blackwell Science Ltd., Oxford. ISBN 0 632 03497 1.
- Temprano A, Yugueros J, Hernanz C, Sánchez M, Berzal B, Luengo JM & Naharro G (2001). Rapid identification of *Yersinia ruckeri* by PCR amplification of *yruI-yruR* quorum sensing. *Journal of Fish Diseases* **24**, 253-261.
- Thomas-Jinu S & Goodwin AE (2004). Morphological and genetic characteristics of *Flavobacterium columnare* isolates: correlations with virulence in fish. *Journal of Fish Diseases* **27**, 29-35.
- Timur G & Timur M (1991). An outbreak of enteric redmouth in farmed rainbow trout (*O. mykiss*) in Turkey. *Bulletin of the European Association of Fish Pathologists* **11**, 182-183.
- Valtonen ET, Rintamaki P & Koskivaara M (1992). Occurrence and pathogenicity of *Yersinia ruckeri* at fish farms in northern and central Finland. *Journal of Fish Diseases* **15**, 163-171.
- Welsh J & McClelland M (1990). Fingerprinting genomes using PCR with arbitrary primers. *Nucleic Acids Research* **18**, 7213-7218.
- Williams JGK, Kubelik AR, Livak KJ, Rafalski AJ & Tingey SV (1990). DNA polymorphisms amplified by arbitrary primers are useful as genetic markers. *Nucleic Acids Research* **18**, 6531-6535.
- Willumsen B (1989). Birds and wild fish as potential vectors of *Yersinia ruckeri*. *Journal of Fish Diseases* **12**, 275-277.
- Yugueros J, Temprano A, Luengo JM & Naharro G (2001). Molecular cloning of *Yersinia ruckeri* *aroA* gene: a useful taxonomic tool. *Journal of Fish Diseases* **24**, 383-390.